

# LINCOLN PARK NEIGHBORHOOD GREEN STREET NETWORK PROJECT



March 15, 2021

City of Los Angeles Proposition O  
Citizen's Oversight Advisory Committee



# Project Overview

The Project is led by the City of Los Angeles Sanitation and Environment (LASAN) in partnership with the City of Los Angeles Department of Recreation and Parks (RAP) to implement a regional multi-benefit stormwater project in the Lincoln Heights neighborhood and Lincoln Park Lake.

## Objectives

- Improve water quality – specifically by reducing bacteria and metals
- Reduce the risk of flooding – with improved sidewalks and roadways
- Community enhancement through the addition of nature based solutions

Project Status – Feasibility Report Completed

Phases for which SCW funding is being requested

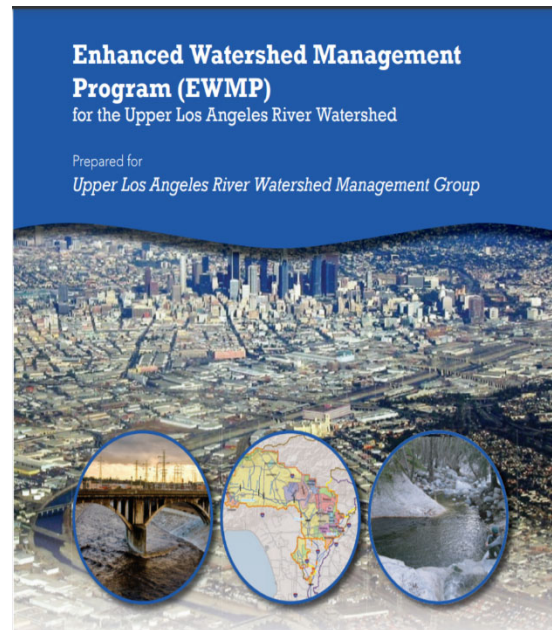
- Planning, Design, Construction

Total Project Cost: **\$18.6 M**



# Project Background

- Area identified in the ULAR EWMP
- Requires 74% load reduction and 31 AF/YR capture (EWMP)
- Lincoln Park Lake listed as an impaired waterbody (EPA 2012)



U.S. Environmental Protection Agency  
Region IX

**Los Angeles Area Lakes  
Total Maximum Daily Loads  
for Nitrogen, Phosphorus, Mercury, Trash,  
Organochlorine Pesticides and PCBs**

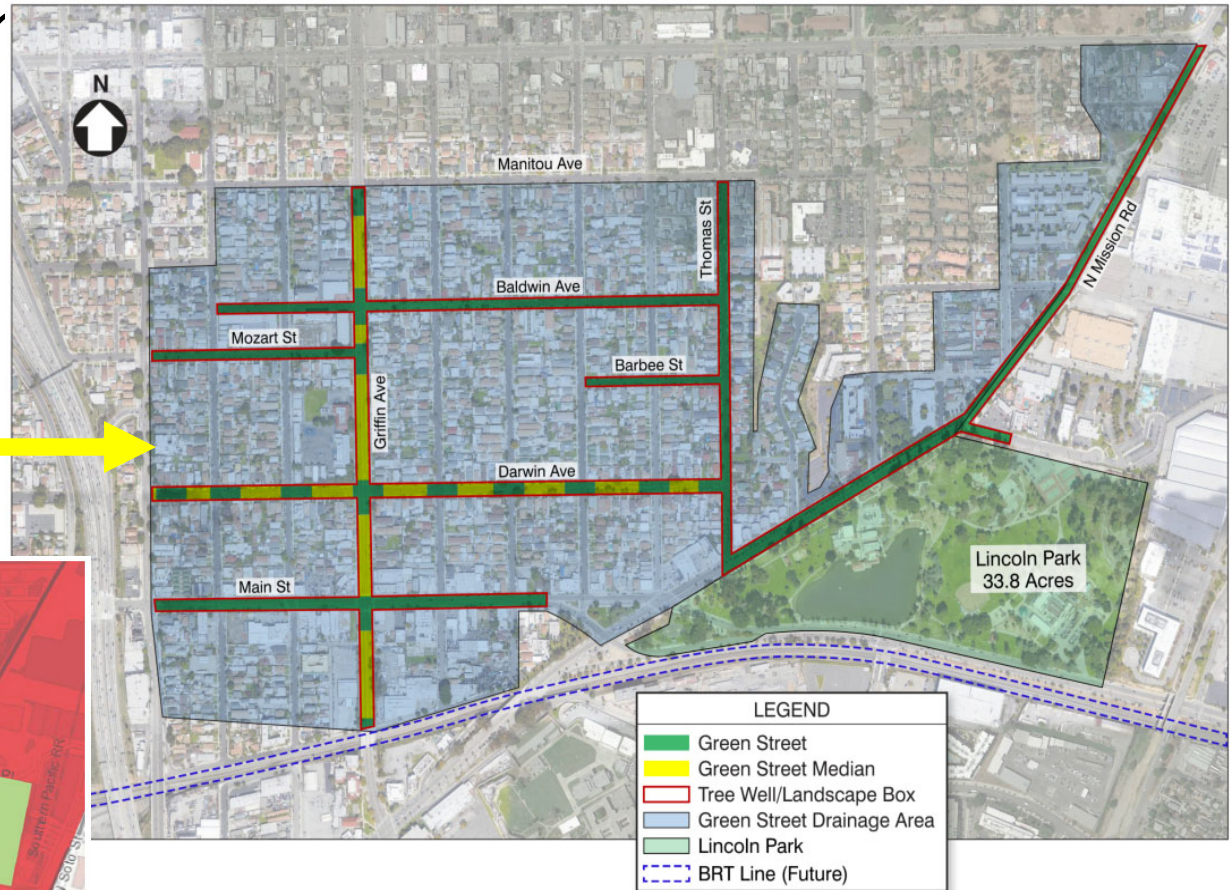
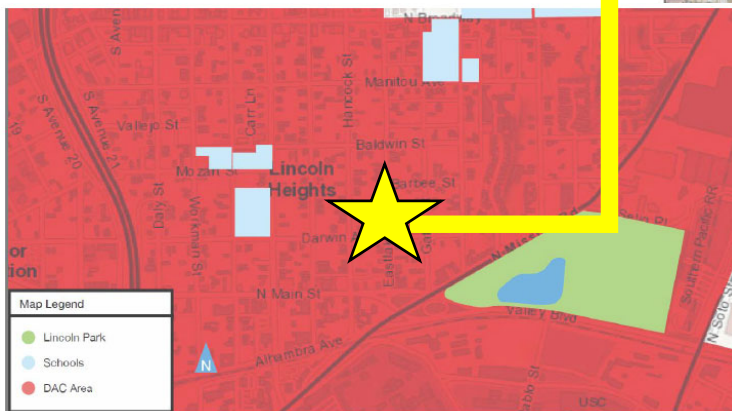


Photo: Puddingstone Reservoir



# Project Location

- City of Los Angeles, Lincoln Heights
- Office of Councilmember, Gilbert Cedillo (Council District 1)
- Within a critical Disadvantage Community



# Project Details

## Lincoln Park Lake – Existing Conditions



### The lake's existing conditions include:

- Poor water circulation/low water depth contributes to mass fish deaths and odor issues
- Crumbling lake edges increases sediment loading and creates safety hazards for visitors
- Boat ramps and existing island provide habitat for large bird populations that contribute to nutrient issues
- The sloped and barren park area convey all surface flows directly to lake further impairing water quality



# Project Details

## Lincoln Park Lake – Proposed Improvements



### Park Elements:

- New California Friendly Garden
- Bioswales connected from East, North and West sides of the Lake
- Porous Pavement Sidewalk

### In Lake Elements:

- Dredging
- Shoreline repair
- Recirculation system, aeration system, and repair fountain

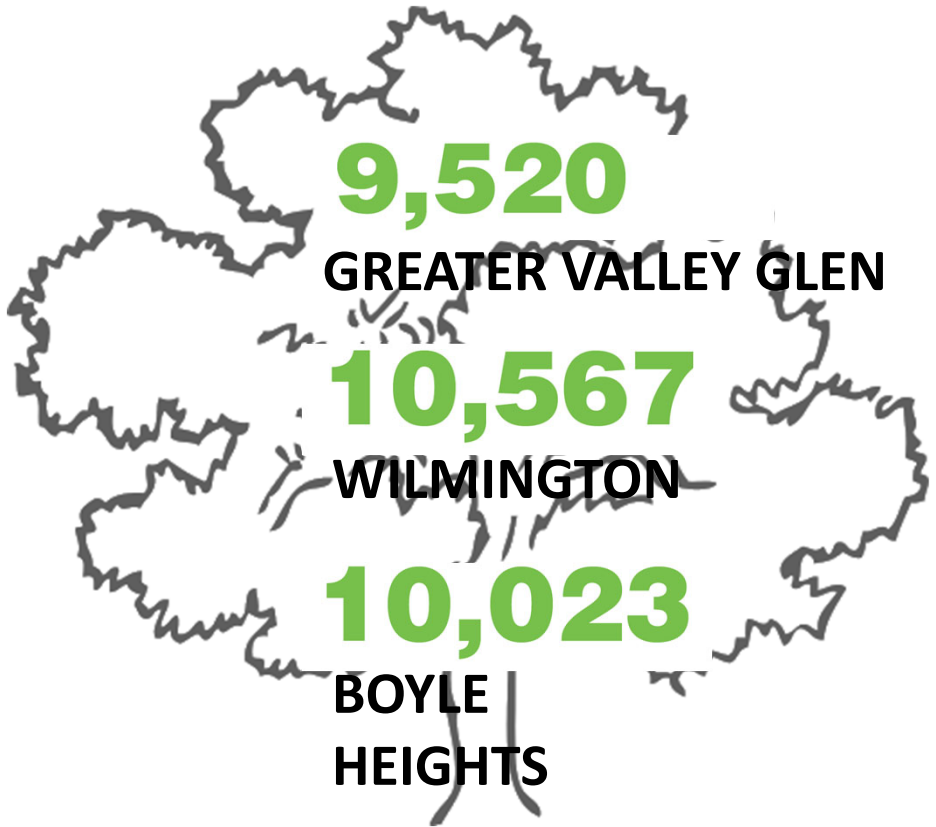


# Project Details

## Neighborhood Existing Tree Inventory



**4,684**  
**LINCOLN HEIGHTS**



# Project Details

## Lincoln Park Neighborhood – Proposed Improvements



### Green Street Elements

- New Parkway Planters
- New Vegetated Medians
- New Street Trees
- Drywells and Catch Basin System





# Project Scope



**500**

**NEW** street trees  
to reduce the heat  
island effect

**16** **NEW** vegetated medians

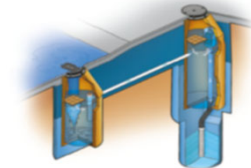


**1100**

**NEW** parkway  
planters  
for added green space



**46** **NEW** drywells for  
stormwater infiltration



More than **3 miles** of **NEW** greenspace



# Project Schedule and Cost

## Project Cost Estimate

Funding Requested	FY 21/22	FY 22/23	FY 23/24	FY 24/25	FY 25/26	Total
Project	\$3,726,916	\$3,726,916	\$3,726,916	\$3,726,916	\$3,726,916	\$18,634,578

## Project Schedule

Preliminary Project Schedule																				
Task Name	YR1-FY21/22				YR2-FY22/23				YR3-FY23/24				YR4-FY24/25				YR5-FY25/26			
	Q1	Q2	Q3	Q4	Q1	Q2	Q3	Q4	Q1	Q2	Q3	Q4	Q1	Q2	Q3	Q4	Q1	Q2	Q3	Q4
Planning																				
Baseline Monitoring																				
Design																				
Permitting																				
Procurement																				
Construction																				
Optimization																				
Outreach																				



# Project Funding

---

- **Project Estimated Total Cost: \$18.6 Million**
- **Potential Funding Sources**
  - Safe Clean Water Program..... \$17 M
- **Funds NOT Secured : \$1.6 Million**



# Questions and Comments

---

**Wing Tam , P.E.**

**Proposition O Planning Program Manager  
LA Sanitation**

**Shahram Kharaghani, P.E., Ph.D.  
Acting Assistant General Manager  
LA Sanitation and Environment**

**Carmen Andrade, P.E.  
Civil Engineering Associate  
LA Sanitation and Environment**

